

# LIVE ONSITE with WEBCAST

# UTIL

2 DAY AUCTION OFFERING MANUFACTURING ASSETS  
OF LEADING TIER 3 BRAKE SYSTEM PARTS MFR. –  
SUBJECT TO COURT APPROVAL

**FEATURING 1,500 LOTS INCLUDING:** (10) FEINTOOL & MORI Fine Blankers – new as 2019, up to 880 -Ton; (11) Fine Blanker Feed Lines – new as 2020; (30+) Mechanical & Hydraulic Presses – new as 2022, Up to 600-Ton; Coil Equipment; Complete Machining & Die Maintenance Facility Including EDMs, CNC & Conventional Machine Tools; Inspection Department; Complete Tumbling & Washing Dept.; 500-Tons of Coil Stock; 1,000-Tons of Production Dies; Support Equipment

## DAY 1

Tuesday, December 12  
at 10:00 AM ET

## DAY 2

Wednesday, December 13  
at 10:00 AM ET

## SALE LOCATION

270 Spinnaker Way,  
Concord, ON L4K 4W1

## INSPECTION

Monday, December 11,  
from 8:30 AM to 4:00 PM

**PRE-AUCTION  
OFFERS INVITED  
ON MAJOR ASSETS**

COMPLETE CATALOG &  
INFORMATION AVAILABLE:  
<https://perfection.global/util>



MORI FB-800-FDE BH 815-TON FINE BLANKER



COE CPPS-507-24 COIL FEED LINE



MIKRON HSM 500 HI-SPEED GRAPHITE VMC



**PERFECTION  
Industrial Sales**

ph +1-847-545-6374 • fax +1-847-427-8884  
[www.perfectionindustrial.com](http://www.perfectionindustrial.com)

In Conjunction With:

**ASSET**  
SERVICES  
AUCTIONS • APPRAISALS

ph +1-416-558-8890  
[www.assetservices.ca](http://www.assetservices.ca)

Bidding Available Through  
**BidSpotter**



# (13) CNC MACHINE TOOLS & EDMS, (17) GRINDERS



2020 MIKRON HSM 500 HI-SPEED GRAPHITE VMC



2011 CHARMILLES CUT 300 WIRE EDM



2003 ROSA LINEA IRON 10.6 HYDRAULIC SURFACE GRINDER



2011 HAAS VF-3 VMC



AGIE AGIECUT EVOLUTION 2 WIRE EDM



2005 OKUMA MC-V4020 VMC



CHEVALIER FSG-1632AD HYDRAULIC SURFACE GRINDER

## DAY 1

### (13) CNC MACHINE TOOLS & EDMS

2020 MIKRON HSM 500 HI-SPEED GRAPHITE VERTICAL MACHINING CENTER, s/n 107.02.00.996, w/ HEIDENHAIN HEROS 5 Control, 21.65" x 17.72" Table, Travels: X-19.69", Y-17.72", Z-13.78", 30,000 RPM, HSK-E40

2011 HAAS VF-3 VERTICAL MACHINING CENTER, s/n 1088553, w/ HAAS Control, 48" x 20" Table, CAT 40, 20-Station ATC

OKUMA MC-V4020 VERTICAL MACHINING CENTER, s/n 0678, w/ OSP-E100M Control, 48" x 20" Table, CAT 40, 20-Station ATC

MATSUURA MC-1000VGX VERTICAL MACHINING CENTER, s/n 990913732, w/ YASNAC Control, 45" x 20" Table CAT 40, 30-Station ATC

SWI TRAK DPM 3 HP CNC MILL, s/n 00-5188, w/ TRAK A.G.E. 3 Control, 50" x 10" Table, Power Draw Bar

2011 CHARMILLES CUT 300 WIRE EDM, s/n 0011, Note: SWISS Made

AGIE AGIECUT CHALLENGE 3 WIRE EDM, s/n 256

AGIE AGIECUT EVOLUTION 2 WIRE EDM, s/n 226

SODICK AP500 WIRE EDM, s/n C692

SODICK AQ535L WIRE EDM, s/n T-0227

SODICK A350 WIRE EDM, s/n 1064

2005 BEIJING AGIE CHARMILLES AGIE DRILL CNC DRILLING EDM, s/n 058-009

EDM SOLUTIONS EDMS 75/10 CNC DRILLING EDM, s/n 8018

### (17) GRINDERS

2003 ROSA LINEA IRON 10.6 HYDRAULIC SURFACE GRINDER, s/n 03011758, w/ 39.5" x 16" Electro-Mag. Chuck, Wheel Dresser, Coolant Filter

CHEVALIER FSG-1632AD HYDRAULIC SURFACE GRINDER, s/n G3865002, w/ 32" x 16" Electro-Mag. Chuck, Wheel Dresser, Coolant Filter

PROTH PSGS-4080AH HYDRAULIC SURFACE GRINDER, s/n 81112-04, w/ 32" x 16" Electro-Mag. Chuck, Wheel Dresser, Coolant Filter

CHEVALIER FSG-3A1224 HYDRAULIC SURFACE GRINDER, s/n FP3174802, w/ 24" x 12" Electro-Mag. Chuck, Coolant Filter



VIEW OF CHEVALIER FSG-618M GRINDERS

2004 PROTH PSGS-3060BH HYDRAULIC SURFACE GRINDER, s/n 0401G-01, w/ 24" x 12" Electro-Mag. Chuck, Coolant Filter

UNISON/DEDTRO 188-0000 HAND FEED SURFACE GRINDER, s/n 19422, w/ DEDTRO Attachment

(9) CHEVALIER FSG-618M HAND FEED SURFACE GRINDERS, see catalog for s/n CHEVALIER 612SP HAND FEED SURFACE GRINDER, s/n A5852003

DELTA TP 750/500 HYDRAULIC SURFACE GRINDER, Note: Parts Machine

9 AVAILABLE



# MACHINE TOOLS, INSPECTION DEPARTMENT, AIR COMPRESSOR, DRYERS & CHILLER

**DAY 1**

Tuesday, December 12  
at 10:00 AM ET



HYD-MECH S-20P HORIZONTAL BANDSAW



KAFO VERTICAL HD TOOLMAKERS MILL

**10 HP**



GIANA TG 360X2000 ENGINE LATHE

## INSPECTION DEPARTMENT

- 2020 KEYENCE VR-3200 3D MEASURING MACROSCOPE, s/n 7C710174
- 2005 MITUTOYO CRYSTA APEX C7106 CMM, s/n 0533509, w/ 68" x 39.5" x 10" Drilled/Tapped Granite Plate, RENISHAW PH6M Probe
- 2010 MITUTOYO CRYSTA PLUS M443 CMM, s/n 28410121, w/ 32.5" x 27.5" x 7.5" Drilled/Tapped Granite Plate, RENISHAW MH20i Probe
- MITUTOYO PH-3500 OPTICAL COMPARATOR, s/n 6N0105, w/ MITUTOYO QM-Data 200 Data Processing Unit
- SIGMA HB400 OPTICAL COMPARATOR, s/n 3149
- ALSO:** ATM TTS-10KN TENSILE TESTER, s/n A100.097; RAISE 3D N SERIES 3D PRINTER, s/n N2; HEIGHT GAUGES, MICROMETERS, GAUGE BLOCKS, VERNIERS, DIAL BORE GAUGES, PIN GAUGES, GRANITE SURFACE PLATES, ETC.



KEYENCE VR-3200 3D MEASURING MACROSCOPE



ATM TTS-10KN TENSILE TESTER

## MACHINE TOOLS

- GIANA TG 360X2000 36" X 76" GAP BED ENGINE LATHE, s/n 2383, w/ 6" Thru-Spindle, Quick Change Tool Post, HEIDENHAIN 2-Axis DRO
- KOHEMA KHL-1880 18" X 80" ENGINE LATHE, s/n KHL-5155, w/ Quick Change Tool Post
- ACRA 18" X 40" TOOL ROOM LATHE, s/n NA
- HARDINGE TFB-H PRECISION LATHE, s/n NA
- KAFO KF-VBM-AL (4V) 10 HP VERTICAL HD TOOLMAKERS MILL, s/n AL11070, w/ 75" x 17.5" Power Feed Table, Power Draw Bar, FAGOR 3-Axis DRO
- HH ROBERTS 5VK 5 HP VERTICAL MILL, s/n 877353, w/ 50" x 10" 3-Axis Power Feed Table, Power Draw Bar, ANILAM 3-Axis DRO
- ALSO:** (3) FIRST LC-183VS 3 HP VERTICAL MILLS, s/n 60302141, 20905000, 01004571, w/ 50" x 10" Table; FIRST LC 1-1/2 VS 2 HP VERTICAL MILL, s/n 40420853, w/ 42" x 9" Power Feed Table; HYD-MECH S-20P HORIZONTAL BANDSAW, s/n 70397091; E.R. MAIER KM1012 ROLL-IN TYPE VERTICAL BANDSAW, s/n 95798; K&K ROLL-IN TYPE VERTICAL BANDSAW, s/n 9297; SEIWA MG-915 RADIAL ARM DRILL, s/n S791210; ERLO TCA30 GEARED HEAD DRILL PRESS, s/n NA; ERLO TC25 GEARED HEAD DRILL PRESS, s/n NA; EDWARDS 16 GA X 36" SHEAR, s/n 85S010102; CAROLINA 55-TON HYDRAULIC SHOP PRESS, s/n 54432, (15) TONS ASSORTED TOOL STEEL, BELT/DISC SANDERS, DRILL PRESSES, ARBOR PRESSES, DOUBLE END GRINDERS, TAPPING ARMS, ROTARY TABLES, VISES, CHUCKS, CAT 40 TOOL HOLDERS, DEMAGNETIZERS, EDM TOOLING, PERISHABLE TOOLING, CLAMPING KITS, POWER AND HAND TOOLS, ETC.



MITUTOYO PH-3500 OPTICAL COMPARATOR



MITUTOYO CRYSTA APEX C7106 CMM



VIEW OF KAESER AIR COMPRESSORS AND DRYERS



(1 OF 2) AIR RECEIVER TANKS

## AIR COMPRESSOR, DRYERS & CHILLER

- (3) 2015 KAESER CSD 125 125 HP ROTARY SCREW AIR COMPRESSORS, s/n 2155, 2154, 2147
- 2015 KAESER TI 521E 575V WC REFRIGERATED AIR DRYER, s/n 1000003785459, w/ 1,750 SCFM @ 100 PSIG and 100 Deg F
- 2015 KAESER USTI 521E575V WC REFRIGERATED AIR DRYER, s/n 1000003047648, w/ 1,750 SCFM @ 100 PSIG and 100 Deg F
- KAESER KFC 400 OIL/WATER SEPARATOR
- GARDNER DENVER EBERFD TANK MOUNT 25 HP AIR COMPRESSOR, s/n M80387
- GARDNER DENVER RNC250A5HR AIR DRYER, s/n GD250A5750410081
- VARIOUS AIR RECEIVER TANKS
- BERG TT-866-1(30)X2(60) CHILLER CIRCULATION SYSTEM, s/n W01788B-EC1-0406

**PRE-AUCTION OFFERS INVITED ON MAJOR ASSETS**

COMPLETE CATALOG & INFORMATION AVAILABLE:  
<https://perfection.global/util>

**AUCTION  
CONDUCTED  
IN US FUNDS  
(USD)**



# FACTORY SUPPORT EQUIPMENT



SKYJACK SJ III 4626 SCISSOR LIFT



**400 SECTIONS**

VIEW OF ADJUSTABLE PALLET RACKING



**400 SECTIONS**

VIEW OF ADJUSTABLE PALLET RACKING



**3 AVAILABLE**

CUSTOM HD DIE WORKTABLES W/ GANTRY



**W/ STAIRS**

30' X 25' X 11' MEZZANINE

## FACTORY SUPPORT EQUIPMENT

### OFFERED BOTH DAY 1 & DAY 2

(2) SKYJACK SJ III 4626 SCISSOR LIFTS, s/n 713336, 707199; (2) SKYJACK SJ III 3220 SCISSOR LIFTS, s/n 611782, NA; 2022 ECONO LIFT SD64-10-5043 4,000 LB. HYDRAULIC BIN/PARTS DUMPER, s/n S22413-1; 2021 ECONO LIFT TR-SL36-40P MOBILE HYDRAULIC SCISSOR LIFT, s/n 531322-1; ELECTRIC WALKY-TYPE DIE HANDLER; PRIME MOVER WSX25 2,000 LB. ELECTRIC WALKY-TYPE FORKLIFT, s/n WSX2533126001; (400) SECTIONS ADJUSTABLE PALLET RACKING; CANTILEVER RACKING; CUSTOM 30' X 25' X 11' HIGH MEZZANINE, w/ Stairs; (3) CUSTOM HD STEEL DIE WORKTABLES, w/ Gantry Rail, (2) 2-TON ELECTRIC HOISTS EACH; (29) CUSTOM HD STEEL DIE WORKTABLES; (51) STRONGHOLD HD STORAGE CABINETS; (38) LISTA, STANLEY VIDMAR CABINETS; ECONOLINE SHOTBLAST CABINET; **ALSO:** WELDERS, DUMPING SCRAP HOPPERS, STACKING PARTS TUBS, STACKING 1/2 DOOR WIRE BINS, STRETCH WRAPPERS, DIGITAL PLATFORM SCALES, TOOL BOXES, JOB BOXES, FLAMMABLE LIQUID STORAGE CABINETS, BEARINGS, ELECTRICAL AND HYDRAULIC PARTS, ELECTRIC MOTORS, STRAPPING TOOLS AND CADDIES, LADDERS



**2021**

ECONO LIFT TR-SL36-40P MOBILE HYDRAULIC SCISSOR LIFT



**29 AVAILABLE**

CUSTOM HD DIE WORKTABLES



VIEW OF BEARINGS



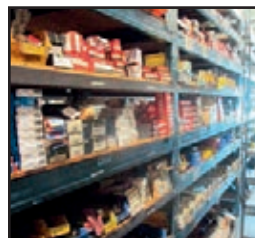
**2022**

ECONO LIFT 4,000 LB. HYDRAULIC BIN/PARTS DUMPER



**7 AVAILABLE**

(3) BIN DUMP/SORT STATIONS



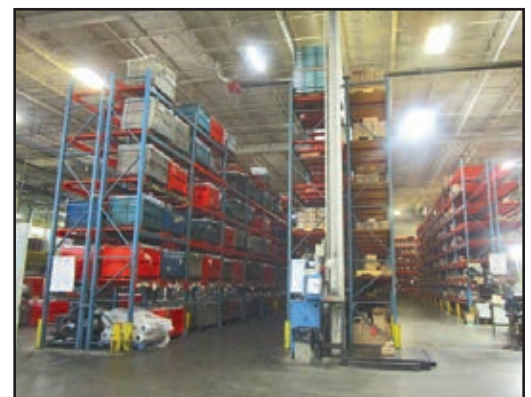
VIEW OF BEARINGS



CONDOR ELECTRIC FLOOR SCRUBBER



VIEW OF PART TUBS/BINS



VIEW OF ADJ PALLET RACKING AND W-I-P

View our current auction schedule at [www.perfectionindustrial.com](http://www.perfectionindustrial.com)



# (10) FINE BLANKING PRESSES

## (10) FINE BLANKING PRESSES

**NOTE: Specifications provided using available information and are deemed to be accurate but not guaranteed. Please reference catalog photos and/or contact manufacturer directly.**

**2019 MORI FB-800-FDE BH 815-TON FINE BLANKING PRESS**, s/n FB-C257, w/ 24" Servo Feeder, 815-Ton Main, 400-Ton V-Ring, 200-Ton Knock Out, 11.02" Stk., 55" x 46" Bed, (2) Die Change Carts, Parts Tumbler/Descrambler, Mag. Incline Discharge Conveyor, Touch Screen Control (FB5)

**2016 MORI FB-800-FDE BH 815-TON FINE BLANKING PRESS**, s/n FB-0184, w/ 24" Servo Feeder, 815-Ton Main, 400-Ton V-Ring, 200-Ton Knock Out, 11.02" Stk., 55" x 46" Bed, (2) Die Change Carts, Parts Tumbler/Descrambler, Mag. Incline Discharge Conveyor, Touch Screen Control (FB1)

**2006 FEINTOOL HFA-8800 PLUS 880-TON FINE BLANKING PRESS**, s/n G/080115, w/ 2006 RAZIOL RB TS-SW-FK 0450-PBI w/ 24" Servo Feeder, 880-Ton Main, 400-Ton V-Ring, 80-Ton Strip, 80-Ton Knock Out, 12.01" Shut Height, 11.02" Stk., 62.99" x 43.33" Die Clamp Area. Parts Tumbler/Descrambler, Mag. Incline Discharge Conveyor, BECKHOFF Touch Screen Control (FB3)

**2000 MORI FB800-FD 815-TON FINE BLANKING PRESS**, s/n 1508, w/ 18" Servo Feeder, 800-Ton Main, 400-Ton V-Ring, 60-Ton Strip, 30-Ton Knock Out, 11.02" Shut Height, 1.18" x 4.72" Stk., 37.4" x 37.4" Bed, Parts Tumbler/Descrambler, Mag. Incline Discharge Conveyor, Touch Screen Control (FB11)

**(2) 2001 FEINTOOL HFA-7000 PLUS 713-TON FINE BLANKING PRESSES**, s/n 7.821, 7.820, w/ RAZIOL 24" Servo Feeder, 713-Ton Main, 650-Ton Shear, 320-Ton V-Ring, 160-Ton Counterholder, 9.06" Stk., 31.1" x 29.92" x 16.14" Max. Die Size, Parts Tumbler/Descrambler, Mag. Incline Discharge Conveyor, BECKHOFF Touch Screen Control (FB2, FB8)

**2000 FEINTOOL HFA-6300 WF 642-TON FINE BLANKING PRESS**, s/n 7.5423, w/ RAZIOL 24" Servo Feeder, 642-Ton Main, 580-Ton Shear, 320-Ton V-Ring, 160-Ton Counterholder, 9.06" Stk., 30.12" x 29.92" x 24.02" Max. Die Size, Part Tumbler/Descrambler, Mag. Incline Discharge Conveyor, UFT 500 Touch Screen Control (FB9)

**(2) 2002 AND 1998 MORI FB-650-FD 650-TON FINE BLANKING PRESSES**, s/n 1596, 1426, w/ 12" Servo Feeder, 650-Ton Main, 320-Ton V-Ring, 60-Ton Strip, 30-Ton Knock Out, 11.02" Shut Height, 1.18" x 4.72" Stk., 41.34" x 39.37" Bed, Part Tumbler/Descrambler, Mag. Incline Discharge Conveyor, Touch Screen Control (FB13, FB10)

**1995 MORI FB-650-FD 650-TON FINE BLANKING PRESS**, s/n 1295, w/ 12" Servo Feeder, 650-Ton Main, 320-Ton V-Ring, 60-Ton Strip, 30-Ton Knock Out, 11.02" Shut Height, 1.18" x 3.94" Stk., 41.34" x 39.37" Bed, Part Tumbler/Descrambler, Mag. Incline Discharge Conveyor, Touch Screen Control (FB7)



MORI FB-800-FDE BH 815-TON FINE BLANKER



FEINTOOL HFA-8800 PLUS 880-TON FINE BLANKER



MORI 815-TON FINE BLANKER AND COE FEED LINE



2000 MORI FB800-FD 815-TON FINE BLANKER AND 2006 COLT COIL FEED LINE



MORI FB-800-FDE BH 815-TON FINE BLANKER



FEINTOOL HFA-7000 PLUS 713-TON FINE BLANKER AND COIL FEED LINE



FEINTOOL HFA-6300 WF 642-TON FINE BLANKER



# (11) FINE BLANKING COIL FEED LINES, (10) STRAIGHT SIDE PRESSES



**2020**

COLT CSHCEJ-1000-12 COIL FEED LINE

## (11) FINE BLANKING COIL FEED LINES

**2020 COLT CSHCEJ-1000-12 CRADLE/STRAIGHTENER FEED LINE**, s/n 128-2525, w/ 10,000 Lb x 12" x .442" Cap., 11-Roll Straightener, 72 OD, Coil Cradle w/ Hold Down, Peeler Table (FB2)

**2019 COE CPPS-507-24 UNCOILER/COIL CAR/STRAIGHTENER FEED LINE**, s/n 75671-2, w/ 15,000 Lb x 24" x .250" Cap., 16" @ .315", 6" @ .551", 11-Roll Straightener, CPR-PO-15024 15,000 Lb x 24" Uncoiler w/ Hold Down and Coil Car, s/n 75671-3 (FB5)

**2016 COE CPPS-507-24 UNCOILER/COIL CAR/STRAIGHTENER FEED LINE**, s/n 69197-3, w/ 15,000 Lb x 24" x .250" Cap., 16" @ .315", 8" @ .475", 11-Roll Straightener, CPR-PO-15024 15,000 Lb x 24" Uncoiler w/ Hold Down and Coil Car s/n 69197-3 (FB1)

**2006 COLT CPTHD-18 UNCOILER/STRAIGHTENER COIL LINE**, s/n 1601537, w/ 15,000 Lb x 18" x .375" Cap., 13-Roll Straightener, CHPR-150018 15,000 Lb x 18" x 72" OD Coil Cradle w/ Hold Down, s/n 1202061 (FB11)

**2006 PERFECTO FEINTOOL S381821 UNCOILER/STRAIGHTENER COIL LINE**, s/n 206051, w/ 10,000 Lb x 18" x .375", 9" x .500" Cap. 17-Roll Straightener, RP107218 10,000 Lb x 18" x 72" OD Dual Uncoiler w/ Hold Down, s/n 206048 (FB3)

**2002 COLT CSHCEJH-1000-18 CRADLE/STRAIGHTENER FEED LINE**, s/n 1281115, w/ 10,000 Lb x 18" x .250" Cap., 9-Roll Straightener, Cradle w/ Hold Down, Peeler Table (FB7)

**1998 DALLAS DCCS-10000X18 CRADLE/STRAIGHTENER**, s/n 18426, w/ 10,000 Lb x 18" x .250" Cap. 7-Roll Straightener, 72" OD, (FB10)

**1995 PERFECTO 38-26-7 CRADLE/STRAIGHTENER FEED LINE**, s/n S5-78195, w/ 10,000 Lb x 18" x .312" Cap., 7-Roll Straightener, Coil Cradle, w/ Hold Down (FB13)



**2016**

COE CPPS-507-24 COIL FEED LINE

**2005 BERTELLO SP 90 BASIC CRADLE/STRAIGHTENER FEED LINE**, s/n 050605, w/ 10,000 Lb x 15" x .250" Cap., Coil Cradle and Hold Down (FB8)

**2001 SARONNI 36/500-R60/300-C88 CRADLE/STRAIGHTENER FEED LINE**, s/n 1000.3000.6800, w/ 10,000 Lb x 14" x .250" Cap., 11-Roll Straightener, Coil Cradle and Hold Down (FB9)

**2002 COLT CSHCEJH-1000-18 CRADLE/STRAIGHTENER FEED LINE**, s/n 1281116, w/ 10,000 Lb x 18" x .250" Cap., 9-Roll Straightener, Cradle w/ Hold Down, Note: Requires Repair



**2019**

COE CPPS-507-24 FEED LINE



2006 COLT CPTHD-18 COIL FEED LINE



**2001**

KOMATSU L2M-600-3BM 600-TON SSDC PRESS

## DAY 2

### (10) STRAIGHT SIDE PRESSES

**2001 KOMATSU L2M-600-3BM 600-TON SSDC PRESS**, s/n 10102, w/ 96.5" x 51.2" Bed, 7.87" Stk., 27.5" SH, 5.9" Adj., 30-80 SPM, 58" Windows (P17) Sold Separately: LITTELL 24" x .250" Press Mounted Servo Feed, s/n NA

**1993 BROWN BOGGS SS2-600-84-48 600-TON SSDC PRESS**, s/n 93121, w/ 84" x 48" Bed, 8" Stk., 24" SH, 12" Adj., 40-100 SPM, 40" Windows (P16) Sold Separately: PERFECTO FES60024 Servo Feeder, s/n 97204

**1992 BROWN BOGGS SS2-600-84-48 600-TON SSDC PRESS**, s/n 92117, w/ 84" x 48" Bed, 8" Stk., 24" SH, 12" Adj., 40-100 SPM, 40" Windows (P18) Sold Separately: PERFECTO 24" x .250" Servo Feed, s/n NA

**1996 MINSTER E2-300 300-TON SSDC PRESS**, s/n 29058, w/ 60" x 36" Bed, 6" Stk., 32" SH, 6" Adj., 0-120 SPM, 23" Windows (P8) Sold Separately: COLT CERF.60.18 HD 18" x .250" Servo Feed, s/n 1141535

**1993 MINSTER E2-300 300-TON SSDC PRESS**, s/n 28202, w/ 60" x 36" Bed, 6" Stk., 32" SH, 6" Adj., 0-120 SPM, 23" Windows (P14) Sold Separately: COLT CERF.60.18 HD 18" x .250" Servo Feed, s/n 1141537

**1991 MINSTER E2-300 300-TON SSDC PRESS**, s/n 27709, w/ 60" x 36" Bed, 6" Stk., 32" SH, 6" Adj., 0-120 SPM, 24" Windows (P12) Sold Separately: COLT CERF.60.18 HD 18" x .250" Servo Feed, s/n 1141536

**1991 MINSTER E2-300 300-TON SSDC PRESS**, s/n 27708, w/ 60" x 36" Bed, 6" Stk., 32" SH, 6" Adj., 0-120 SPM, 24" Windows (P11) Sold Separately: COLT CERF.60.18 18" x .250" Servo Feed, s/n 11411490

**1990 MINSTER E2-300 300-TON SSDC PRESS**, s/n 27426, w/ 60" x 36" Bed, 8" Stk., 26" SH, 6" Adj., 0-120 SPM, 24" Windows (P13) Sold Separately: COLT CERF.60.18 18" x .250" Servo Feed, s/n 1141534

**1986 AIDA NL2-200 200-TON SSDC PRESS**, s/n 17002-001, w/ 61" x 35.4" Bed, 8" Stk., 18.7" SH, 4" Adj., 40-100 SPM, 35" Windows (P5)

**2000 YAMADA DOBBY SVC-300 337-TON SSDC PRESS**, s/n SCV300-0102, Note: Requires Repair (P17)



**2 AVAILABLE**

1993 BROWN BOGGS SS2-600-84-48 600-TON SSDC PRESS



**5 AVAILABLE**

1996 MINSTER E2-300 300-TON SSDC PRESS

**PRE-AUCTION OFFERS INVITED ON MAJOR ASSETS**



# (8) HYDRAULIC 4-POST PRESSES, (16) OBG & OBI PRESSES, COIL FEED EQUIPMENT



CORSTEEL 4P.3640.6 250-TON 4-POST HYDRAULIC PRESS

2022



CORSTEEL 4P-3640-6 250-TON 4-POST HYDRAULIC PRESS

2018

## (8) HYDRAULIC 4-POST PRESSES

2022 CORSTEEL 4P.3640.6 250-TON 4-POST HYDRAULIC PRESS, s/n CH2252H, w/ 60" x 52" Bed, 10" Stk., 20" Daylight, 40" x 36" Between Posts (H08)

2018 CORSTEEL 4P-3640-6 250-TON 4-POST HYDRAULIC PRESS, s/n CH2213-1018, w/ 60" x 48" Bed, 10" Stk., 20" Daylight (H05)

2005 CORSTELL 4P.50X54 200-TON 4-POST HYDRAULIC PRESS, s/n CH1799.09.05, w/ 50" x 54" bed, 10" Stk., 20" Daylight (H02)

2012 CORSTEEL 4P.52X60 120-TON 4-POST HYDRAULIC PRESS, s/n CH1659.02.01.2, w/ 60" x 52" Bed, 10" Stk., 20" Daylight (H03)

2003 CORSTEEL 4P.52X60 120-TON 4-POST HYDRAULIC PRESS, s/n CH1734.03.03.2, w/ 60" x 52" Bed, 10" Stk., 20" Daylight, 40" x 36" Between Posts (H07)

2003 CORSTEEL 4P.52X60 120-TON 4-POST HYDRAULIC PRESS, s/n CH1734.03.03.1, w/ 60" x 52" Bed, 10" Stk., 20" Daylight, 40" x 36" Between Posts (H06)

2002 CORSTEEL 4P.52X60 120-TON 4-POST HYDRAULIC PRESS, s/n CH1659.02.01.1, w/ 60" x 52" Bed, 10" Stk., 20" Daylight, 48" x 40" Between Posts (H01)

2005 CORSTEEL 4P.36X46 75-TON 4-POST HYDRAULIC PRESS, s/n CH1769.03.05, w/ 46" x 36" Bed, 10" Stk., 20" Daylight, 36" x 27" Between Posts (H04)



MINSTER #6SS 60-TON OBG PRESSES

1998



AIDA NC1-200(1) 220-TON OBG PRESSES

4 AVAILABLE

## (16) OBG & OBI PRESSES

(4) AIDA NC1-200(1) 220-TON OBG PRESSES, New As 2002, s/n CO420-0126, 10220-6191, 00220-5524, 10220-5886, w/ 54.7" x 26.7" Bed, 6.3" Stk., 16.14" SH, 4.33" Adj., 35-70 SPM (P22, P3, P2, P4)

MINSTER G1-200 200-TON OBG PRESS, s/n NA, w/ 58" x 34" Bed, 8" Stk., 24" SH, 25-50 SPM (P21)

AIDA NC1-15(1) 165-TON OBG PRESS, s/n 00215-5856, w/ 46.06" x 23.62" Bed, 5.11" Stk., 13.77" SH, 3.93" Adj, 40-85 SPM (HP05)

(2) ARISA G-125-RV 125-TON OBG PRESSES, s/n 12516082, 1251081 w/ 40" x 35" Bed, 7.8" Stk., 16" SH, 3.54" Adj. (CH05, CH04)

BLISS C75 75-TON OBI PRESS, s/n H68619, w/ 36" x 24" Bed, 4" Stk., 15" SH, .35" Adj., 100 SPM (PLA-02)

2007 SEYI SN1-66 66-TON OBG PRESS, s/n EW60-2093, w/ 35.4" x 20.5" Bed, 5.1" Stk., 11.8" SH, 40-75 SPM (CH02)

(4) 1998 MINSTER #6SS 60-TON OBG PRESSES, s/n #6SS-29703, #6SS-29702, #6SS-29701, #6SS-29622, w/ 32" x 21" Bed, 4" Stk., 16" SH, 2.75" Adj., 110-220 SPM (SP4, SP3, SP2, SP1)

1985 AIDA NC1-6(1) 60-TON OBG PRESS, s/n 00206-5672, w/ 34.25" x 15.74" Bed, 3.54" Stk., 10.63" SH, 2.75" Adj., 60-120 SPM (HP02)

1987 KOMATSU OBP-60 60-TON OBG PRESS, s/n 10020, w/ 47.73" x 15.74" Bed, 2.36" Stk., 11.8" SH, 2.75" Adj., 30-225 SPM (HP01)



(3 OF 4) 1998 MINSTER #6SS 60-TON OBG PRESSES

1998



LITTELL 24" X .250" SERVO FEED

2 AVAILABLE

AUCTION CONDUCTED IN US FUNDS (USD)



COLT CERF-40-12 SERVO FEEDERS



MECON CCS100 COIL CRADLE/STRAIGHTENER



MECON CCS-0695 COIL CRADLE/STRAIGHTENER



4 AVAILABLE

COLT CSHC-100-12 COIL CRADLE/STRAIGHTENER

## COIL FEED EQUIPMENT

BRUDERER RM 3035-1 14 LEVELER, s/n 60 125, w/ 10 Over 11-Rolls; LITTELL 24" X .250" SERVO FEED, s/n NA; MECON CCS100 COIL CRADLE/STRAIGHTENER, s/n CCS0795, w/ 10,000 Lb x 30" x .250" Cap., Hold Down, Peeler Table (P17); MECON CCS-0695 COIL CRADLE/STRAIGHTENER, s/n CCS0695, w/ 10,000 Lb x 24" x .250" Cap. (P18); ROWE C8-20-8J COIL CRADLE/STRAIGHTENER, s/n 26326, w/ 8,000 Lb x 20" x .175" Cap. (P14); C.C.I. CS-8-20 COIL CRADLE/STRAIGHTENER, s/n CS-8-20-03-03, w/ 10,000 Lb x 18" x .250" Cap (P21); (4) COLT CSHC-100-12 COIL CRADLE/STRAIGHTENERS, s/n 1281067, 1281060, 1281058, NA, w/ 10,000 Lb x 12" x .250" Cap. (P13 P12, P11, P8); ROWE 10,000 LB X 24" X .175" COIL CRADLE/STRAIGHTENER, s/n NA; (2) COLT 10,000 LB X 12" X .187" COIL CRADLE/STRAIGHTENERS, s/n NA (P5, HO04); (4) RAPIDAIR SCM12 12" X .070" STRAIGHTENERS, s/n 110532, 110531, 110530, 110528; (4) RAPIDAIR 12" X .070" SERVO FEEDERS, s/n 134885, 110324, 110322, 110308 (SP4, SP3, SP2, SP1); COLT 12" X .187" SERVO FEED, s/n NA (P22); MECON 400F18I SERVO FEEDER, s/n 2406-94 (P21); (2) COLT CERF-40-12 SERVO FEEDERS, s/n 1141342, 1141532 (HP04, HP05); COLT 12 SERVO FEED, s/n NA (P5); COLT CERF-40-18 HK SERVO FEEDER, s/n 1141389 (HP05); MOOSONG MNF-200 SERVO FEED, s/n NA (HP01); MECON 400BLM 4,000 LB X 18" DOUBLE UNCOILER, s/n 40003 (HP01); (4) COLT CRD-25-12 2,500 LB. DOUBLE END MOTORIZED UNCOILERS, s/n 1201691, 110533, 110532, 110531 (SP4, SP3, SP2, SP1); VOGEL 424 4,000 LB. UNCOILER, s/n 0729199 (HP05); VOGEL 2518 2,500 LB. UNCOILER, s/n 03811229 (HP05)



# PARTS FINISHING & WASHING/DRYING, BRAKE DRUM RIVETERS



**2020**

LOESER FB384/300/4 DEBURRING AND FINISHING MACHINE



(2) ROSLER R 1050 A ROTARY VIBRATORY DEBURRERS



**2020**

CEEVER 2F15 STAINLESS STEEL PARTS WASHER/DRYER LINE

## PARTS FINISHING & WASHING/DRYING

2020 LOESER FB384/300/4 EDGE AND SURFACE DEBURRING AND FINISHING MACHINE, s/n 8354, w/ SIEMENS SIMATIC HMI Touch Screen Control, (4) Heads, 0.98" Max. Part Height, 11.02" Max. Part Width, Belt Feed, Demagnetizer, Discharge Blow-Off Conveyor, Coolant Recovery/Filtration System

2005 BOSSI RSP400/3.000/2U GRINDING/POLISHING MACHINE, s/n 36-40-21-A

(2) 2016 ROSLER R 1050 A ROTARY VIBRATORY DEBURRERS, s/n 74562, NA

(3) ROSLER R 1050 ROTARY VIBRATORY DEBURRERS, s/n 49086, 49084, 49083, w/ 1050 L Cap.

VIBRA VF 24 VIBRATORY BOWL FINISHER, s/n 3.34878, w/ 91" Dia. Bowl, 24 Cu. Ft. Cap.

2007 ALMCO GLC B195910 VIBRATORY DEBURRER, s/n 16-006

2010 ROSLER R20/10/40PR BUTTERING SHUTE, s/n 49802

ROSLER 60" X 36" VIBRATORY SHAKER CONVEYOR

(2) 72" X 18" MAG. BELT SEPARATORS

2020 CEEVER 2F15 STAINLESS STEEL PARTS WASHER/DRYER LINE, s/n NA, w/ 40" Belt, Infrared Dryer, Air Wipe

HURRICANE SYSTEMS 250 WASH/BLOW OFF PARTS WASHER/DRY-OFF, s/n 43566, w/ 24" Auger, Tub Tilter/Loader

2002 ALMCO/PINTURA FINISHING 30-WRD-G NG FIRED WASH/BLOW OFF PARTS WASHER/DRYER, s/n 1211002, Tub Tilter/Loader

2001 APPLIED HEAT EQUIPMENT DR-WSH-24X205 NG FIRED WASH/BLOW OFF PARTS WASHER/DRYER, s/n W8807, Tub Tilter/Loader

## BRAKE DRUM RIVETERS

2008 BONETTO AUTOMAZIONI MRRG 155 BRAKE JAWS RIVETER, s/n 08155

2006 BONETTO AUTOMAZIONI MRRG 143 BRAKE JAWS RIVETER, s/n 05143.2

COMPLETE CATALOG & INFORMATION AVAILABLE:  
<https://perfection.global/util>



ROSLER R 1050 ROTARY VIBRATORY DEBURRERS AND BUTTERING SHUTE



**2005**

BOSSI RSP400/3.000/2U GRINDING/POLISHING MACHINE



2002 ALMCO/PINTURA FINISHING 30-WRD-G PARTS WASHER/DRYER



**2008**

BONETTO MRRG 155 BRAKE JAWS RIVETER



**2016**

ROSLER R 1050 ROTARY VIBRATORY DEBURRERS AND BUTTERING SHUTE



HURRICANE SYSTEMS 250 WASHER/DRY-OFF

AUCTION CONDUCTED IN  
US FUNDS (USD)

**DAY 2**

Wednesday, December 13 at 10:00 AM ET

**PRE-AUCTION OFFERS INVITED  
ON MAJOR ASSETS**

View our current auction schedule at [www.perfectionindustrial.com](http://www.perfectionindustrial.com)



# CRANES & MATERIAL HANDLING, COIL STEEL, STAMPING DIES



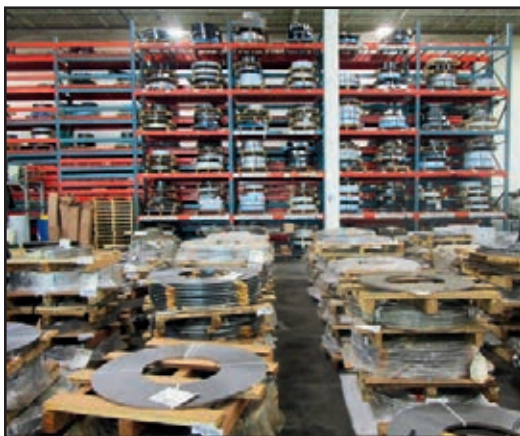
CANADIAN CRANE FREE STANDING OVERHEAD BRIDGE CRANE SYSTEM



CANADIAN CRANE FREE STANDING OVERHEAD BRIDGE CRANE SYSTEM



(2) CANADIAN CRANE 5-TON X 36' (EST) OVERHEAD BRIDGE CRANES



VIEW OF DIES

## DAY 2

Wednesday, December 13 at 10:00 AM ET



(2) CANADIAN CRANES 10-TON X 36' (EST) OVERHEAD BRIDGE CRANES

## CRANES & MATERIAL HANDLING

(2) CANADIAN CRANES 10-TON X 36' (EST) OVERHEAD BRIDGE CRANES, s/n 10145-2, 10145-1, w/ Radio Control

CANADIAN CRANE FREE STANDING OVERHEAD BRIDGE CRANE SYSTEM, w/ (2) 5-Ton x 36' (est) Hoist and Bridge, s/n 24152-2, 24152-1, w/ Radio Control, 36' x 240' Crane Rail Structure

CANADIAN CRANE FREE STANDING OVERHEAD BRIDGE CRANE SYSTEM, w/ (2) 5-Ton x 36' (est) Hoist and Bridge, s/n 10994-2, 10994-1, w/ Radio Control, 36' x 480' Crane Rail Structure (Stamping Bay)

(2) CANADIAN CRANE 5-TON X 36' (EST) OVERHEAD BRIDGE CRANES, s/n 10589-2, 10589-1, w/ Pendant Control

GORBEL 12' X 20' X 2-TON FREE STANDING CRANE SYSTEM

CONTRX 1/2-TON FREE STANDING JIB CRANE, w/ 1/2-Ton Chain Block



VIEW OF COIL STEEL

## COIL STEEL

APPROXIMATELY 950,000 LBS. (475-TONS) OF COILS – Various Thickness and Width

See Catalog for Details

## STAMPING DIES

APPROXIMATELY 2,600,000 LBS. (1,300-TON) OF STAMPING DIES

See Catalog for Details

## DAY 1

Tuesday, December 12 at 10:00 AM ET

## DAY 2

Wednesday, December 13 at 10:00 AM ET

## SALE LOCATION

270 Spinnaker Way, Concord, ON L4K 4W1

## INSPECTION

Monday, December 11, from 8:30 AM to 4:00 PM

For auction inquiries, please contact Jennifer Reiner at (847) 545-6374 or [jennifer@perfectionindustrial.com](mailto:jennifer@perfectionindustrial.com)

### REMOVAL

All items must be removed no later than Wednesday, January 31. All removal is strictly on an appointment only basis. Anyone removing purchased items with a lift truck or another powered vehicle must have a certificate of insurance with a \$2M General Liability policy, the policy must include a Worker's Compensation rider, and that certificate of insurance must be provided to the auctioneer for review and approval prior to the auction.

### FURTHER INFORMATION

For auction inquiries, please contact Jennifer Reiner at +1-847-545-6374 or email [jennifer@perfectionindustrial.com](mailto:jennifer@perfectionindustrial.com).

### TERMS OF SALE

An 18% Buyer's Premium will be charged on all assets purchased by buyers providing full payment is made within 48 hours following the sale. Acceptable forms of payment are cashier's check, company check (with bank letter of guarantee) or wire transfer within 48 hours of the sale close. For any Buyers failing to pay within the 48 hour stated payment period, the Buyer's Premium will be increased to 20%. All invoices paid with a credit card are subject to a 20% Buyer's Premium. Everything will be sold to the highest bidder, in accordance with the Auctioneer's customary "Terms of Sale" copies of which will be posted on the Auctioneer's website and subject to additional terms announced the day of sale. All items are sold "As is, Where is" without any warranty, express or implied.

**AUCTION CONDUCTED IN US FUNDS (USD)**

Bidding Available Through

**BidSpotter**

View our current auction schedule at [www.perfectionindustrial.com](http://www.perfectionindustrial.com)